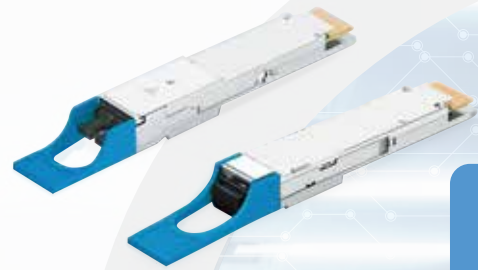




高明鐵企業股份有限公司
GMT GLOBAL INC.

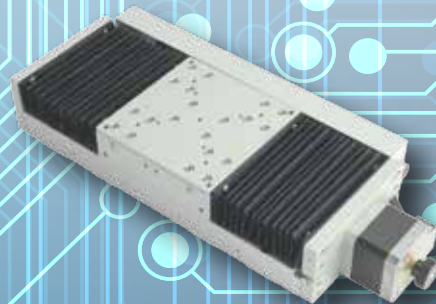
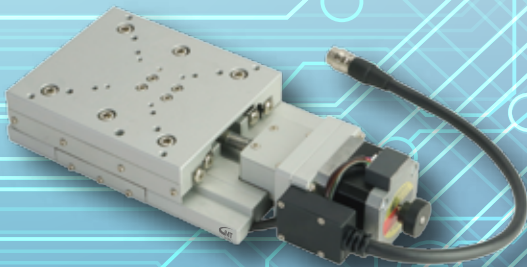
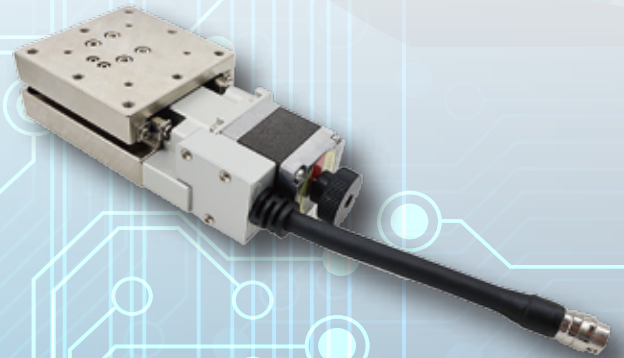
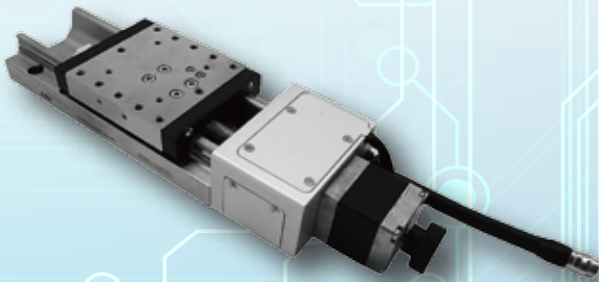
Optical Communication Solutions



1.6T



800G & 400G



Mechanism's repeatability accuracy $\leq \pm 0.3 \mu\text{m}$

With a linear scale, the mechanism's repeatability accuracy can be improved to $\leq \pm 0.1 \mu\text{m}$.

Optical Fiber Alignment System Features

- Rapid completion of initial positioning and calibration with image-assisted assistance.
- Management of the algorithm coordinate system enables the alignment of fibers at different angular orientations, resulting in high versatility.
- Motion trajectories include region scanning and maximum light intensity search, enabling efficient trajectory error compensation calculations and achieving high-precision alignment goals.
- High-resolution motors and optical encoders with light feedback enable real-time precise motion control and ensure high reproducibility.
- A new machine process with a smaller backlash and higher repeatability.
- Integration of functions such as machine communication, image-assisted features, coordinate system management, motion control algorithms, and 3D data and image display makes operation easy and convenient for application integration.

Specification_CXN80 series (lead 1mm) with different motors

Specification	Oriental Motor PKP series	Fastech EZ SERVO	Oriental Motor AZ closed loop	Oriental Motor 5-phase full closed loop
Motor Type	5-phase Stepper Motors	2-phase Stepper Motors	2-phase Stepper Motors	5-phase Stepper Motors
Encoder Type	open loop	closed loop (optical encoder disk)	closed loop (optical encoder disk)	ATOM Linear Scale
Correction Mode	N/A	incremental	absolute	incremental
Resolution	0.5μm(full step) 0.25μm(half step)	0.05μm	0.1μm	0.1μm
Resolution(1/20split)	0.025μm	N/A	N/A	N/A
Positioning Accuracy standard value (5μm)	3μm	3μm	3μm	3μm
Repeatability Accuracy standard value (±5μm)	±0.3μm	±0.25μm	±0.25μm	±0.1μm
Lost Motion standard value (<1μm)	0.5μm	0.3μm	0.3μm	0.1μm

※ For detailed specifications, please visit the official website's download section to access the catalog.



高明鐵企業股份有限公司
GMT GLOBAL INC.

www.gmtglobalinc.com



Global Operation Headquarter

No. 357, Sec. 1, Yaofeng Rd., Puxin Township,
Changhua County 513004, Taiwan
TEL : +886-4-8282825
FAX : +886-4-8282228
E-mail : Md@gmt.tw

Xiushui Office

No.3, Ln. 34, Minzhu St.,
Xiushui Township, Changhua County ,
504009, Taiwan
TEL : +886-4-7688327
FAX : +886-4-7688314

Dongguan Ding Qi Intelligent Automation Technology Ltd.

No.8 Factory ,SHUI-BIAN Industrial Zone,
Hengli Town, Dongguan City,
Guangdong Province, China
Service Line : +86-400-770-6066

GMT Europe GmbH

Am Detershof 20
26655 Westerstedde
Germany
TEL : +49 (0) 4488 761 746